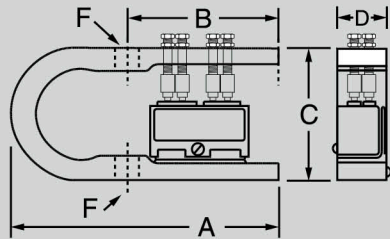
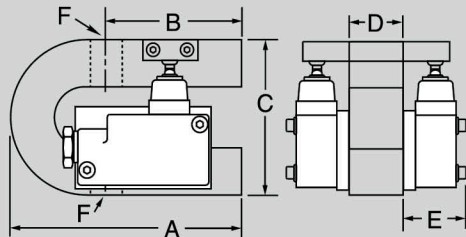


	DSW-1	DSW-2	DSW-3	DSW-4	DSW-5	DSW-6	DSW-7
A in (cm)	5.12 (13.0)	5.12 (13.0)	6.00 (15.2)	5.50 (14.0)	6.00 (15.2)	8.25 (21.0)	9.31 (23.7)
B in (cm)	2.94 (7.5)	2.94 (7.5)	3.50 (8.9)	3.00 (7.6)	3.50 (8.9)	5.00 (12.7)	5.00 (12.7)
C in (cm)	2.48 (6.3)	2.48 (6.3)	3.96 (10.1)	2.98 (7.6)	3.96 (10.1)	4.69 (11.9)	5.50 (14.0)
D in (cm)	0.98 (2.5)	0.98 (2.5)	1.47 (3.7)	0.98 (2.5)	1.44 (3.7)	2.38 (6.1)	2.68 (6.8)
E in (cm) <i>Option B</i>	n/a	n/a	1.59 (4.0)	n/a	1.59 (4.0)	1.59 (4.0)	1.59 (4.0)
E in (cm) <i>Option C</i>	n/a	n/a	2.48 (6.3)	n/a	2.48 (6.3)	2.48 (6.3)	2.48 (6.3)
F (thread)	¼ - 28 UNF	½ - 20 UNF	⅞ - 14 UNF	½ - 20 UNF	⅞ - 14 UNF	1¼ - 12 UNF	1¾ - 12 UNF

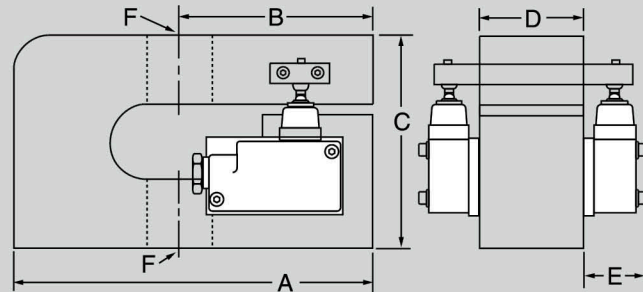
*Multiply by 3 for Option C.



100 lb, 1,000 lb and 5,000 lb capacity force beam. Illustrated with four low differential switches.



2,000 lb and 10,000 lb capacity force beam. Illustrated with two weatherproof switches (option 2B).



25,000 lb and 50,000 lb capacity force beam. Illustrated above two weatherproof switches (option B).